

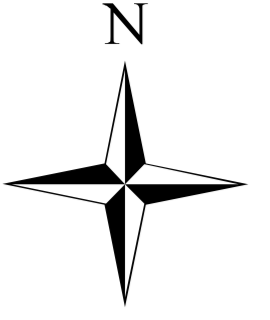
-70000

-65000

-60000

-55000

-50000



-74000

-74000

-81000

-81000

-88000

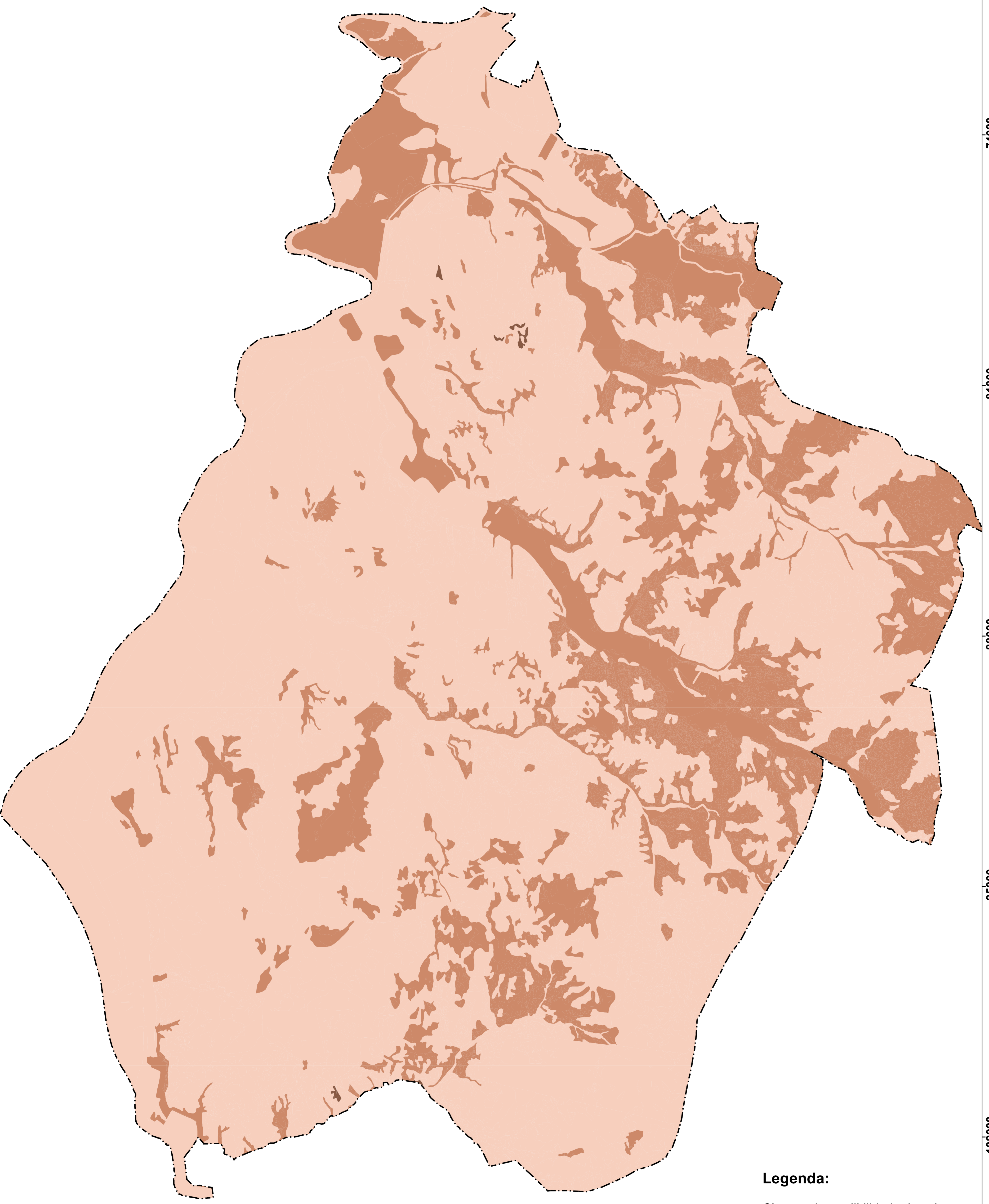
-88000

-95000

-95000




-102000

-102000



Legenda:

Classes de erodibilidade do solo:

-  Er 1 - Fraca
-  Er 2 - Moderada
-  Er 3 - Grande

Escala: 1/50 000

-70000

-65000

-60000

-55000

-50000